

ENVIRONMENTAL
TECHNOLOGY

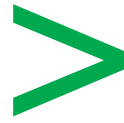
HSM Horizontal Baling Presses
Waste Management and Recycling Solutions
for Industry, Retailers and Manufacturers



HSM®



**Volume reduction
up to 95%**



**create and sell bales
of recyclable material!**



Save on waste costs with volume reduction!

HSM baling presses can reduce the volume of your waste by up to 95%! Which means valuable space is saved on site and you have the opportunity to generate a secondary raw material of sorted

bales, which can be incorporated back into the recycling system. What's more: the baled recycled material has a value which can offset your disposal costs and may even generate a profit.

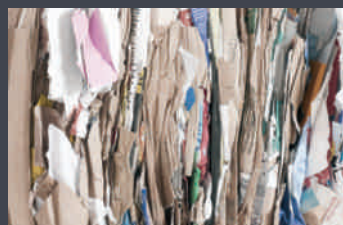
HSM quality has an obvious reason: The "Made in Germany" seal of approval.

HSM has always adhered to quality principles, whether in development and construction, production, project planning or service. All HSM plants are certified according to DIN EN ISO 9001 and work towards the creation of long-lasting products that retain the value of the HSM brand long into the future. The clear belief in German

production is a part of the responsibility that comes with being an integral part of the regional community. In HSM manufacturing plants, motivated and highly-skilled professionals are dedicated to securing the position of HSM in Germany.



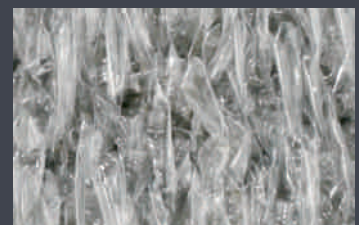
Wide range of application:



cardboard



car tyres



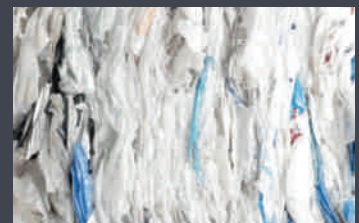
PET/UBC



expanding foams



stiff plastics



plastic film

*Further materials
upon request*

HSM Horizontal Baling Presses



HSM HL 4010

Advantages and features:

Advantages:

- **The volume of most packaging material is reduced by up to 95 % in a matter of seconds!**
- **Application areas:** wholesale, manufacturers, logistics, central stores, paper industry, printing plants, distribution centres, food retailers
- **Materials:** paper, cardboard, plastic film, expanding foams, polystyrene, hollow vessels, metal buckets, barrels, car tyres and much more
- **Pressing power:** from 80 kN to 400 kN
- **Bale weight:** up to 600 kg
- **Low overall height, large loading aperture,** also suitable for bulky material

Technical features:

- **Long service life** due to the wear-resistant electro-hydraulic drive
- **High throughput capacity** with large loading aperture
- **Low subsequent costs** due to low-maintenance hydraulics
- **Smooth, trouble-free operation** due to torsion-free press ram guidance with roller bearings
- **Easy operation** by membrane keypad
- **Optimal compression** due to retaining claws in the press chamber
- **Polythene bag attachment** as option
- **Feeding:** manual or automatic
- **Bale strapping:** manual, with polyester tape or wire

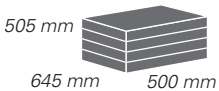


HSM 8 TE

Size doesn't matter!

In terms of performance, efficiency and flexibility our mobile HSM 8 TE small baler is hard to beat. This compact baling press is also extremely easy to operate: insert the strapping tape, switch it on and watch it go! Also the strapping and ejection of the bales can be performed easily. The complete bale ejection means that the compact bales are ejected by the machine directly onto a pallet and can be easily transported to a storage location.

- Automatic return stroke of press ram after the pressing cycle
- Secured loading flap during compression by encoded solenoid switch
- Convenient bale strapping with continuous polyester tape
- The electronically secured bale removal door with automatic bale unloading provides the highest ease of operation

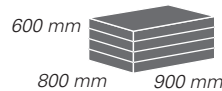


HSM 12 Gigant

Flexible compactor for voluminous material.

Our HSM 12 Gigant is in its element anywhere where voluminous cardboard packaging, plastic film or other materials need to be pressed. The extremely large loading aperture makes the unit simple and convenient to load. The result is compact bales which can be easily transported. And if the baler is required urgently in another part of the company – no problem: its 4 castors mean that it can be used anywhere at any time.

- The standard hardened chrome-plated piston rod guarantees a long service life
- The hydraulic counter plate provides the highest ease of operation and reliability
- Fast, convenient, 3-fold bale strapping with continuous polyester tape
- The full stroke of the press ram ejects the bale completely



Model	HSM 8 TE	HSM 12 Gigant
Pressing power in kN	80	140
Motor in kW	4	7,5
Voltage / Frequency	3 x 400 V / 50 Hz	3 x 400 V / 50 Hz
Loading aperture W x L in mm	645 x 730	800 x 1200
Loading height in mm	690	780
Bale weight in kg, depending on material	bis 70	bis 150
Maximum bale size W x H x L in mm	645 x 505 x 500	800 x 600 x 900
Hourly output in bales	4 - 7	3 - 7
Cycle time idle operation (theor.) in sec.	21	30
Dimensions of machine L x W x H in mm	2520 x 780 x 850	4300 x 1030 x 1630
Machine weight in kg	590	1280
Strapping	3-fold with polyester tape	3-fold with polyester tape

All technical data and dimensions are approximate values. Technical and design modifications reserved.

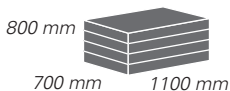


HSM HL 1615

The Keyword is "Rugged"!

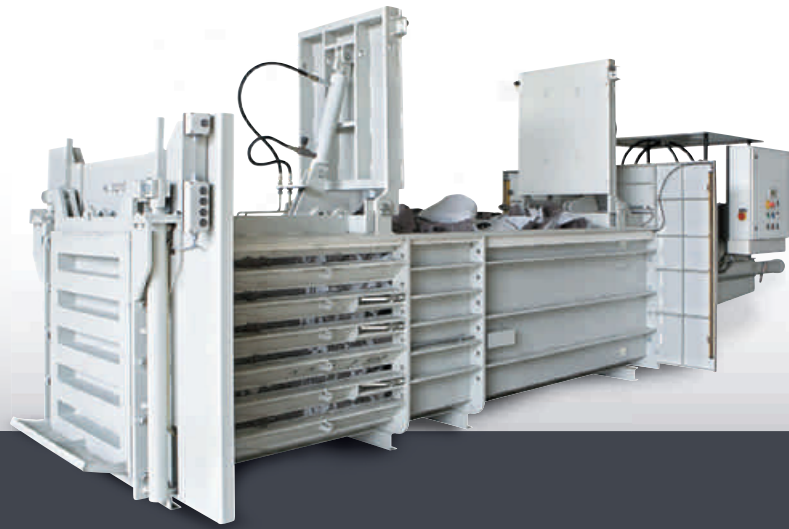
This all-purpose stationary baler is designed for high loads and completely flattens paper scraps, large cardboard boxes, plastic foils and comparable materials – even rigid paint cans and light metal barrels (up to 200 litres). To handle even extreme one-sided loads in the press chamber, the press ram guidance has a specially large and sturdy construction. Both large loading flaps, which together function as oversize feeding opening, make it possible to compact voluminous materials simply and quickly without having to manually tear them into smaller pieces beforehand.

- High throughput capacity with large split loading aperture
- The standard hardened chrome-plated piston rod guarantees a long service life
- The hydraulic counterplate provides the highest ease of operation and reliability
- Manual bale strapping with continuous polyester tape, available as 3-fold or 4-fold version
- The full stroke of the press ram ejects the bale completely
- Optimum operator protection provided by lateral protective grating and safety lock for the loading flaps
- Baler can be transported for reassembly



Model	HSM HL 1615
Pressing power in kN	150
Motor in kW	7,5
Voltage / Frequency	3 x 400 V / 50 Hz
Loading aperture W x L in mm	700 x 1500
Loading height in mm	990
Bale weight in kg, depending on material	bis 180
Maximum bale size W x H x L in mm	700 x 800 x 1100
Hourly output in bales	3 - 7
Cycle time idle operation (theor.) in sec.	32
Dimensions of machine L x W x H in mm	4530 x 1100 x 1990
Machine weight in kg	1700 (3-fold strapping) / 1800 (4-fold strapping)
Strapping	3-fold or 4-fold with polyester tape

All technical data and dimensions are approximate values. Technical and design modifications reserved.

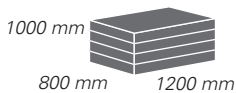


HSM HL 3521 / HL 3521 S

All-round professional expertise

To ensure our customers have the right machine for their needs we have developed two variants of our tried and tested HSM HL3521 semi-automatic horizontal baler. The basic model, the HL 3521, with its exceptional large loading aperture is the perfect machine for compressing large quantities of paper, cardboard, foils or packaging material and for extremely large and bulky materials. The 6-fold strapping is performed in a manual process with continuous polyester tape or wire. The HL 3521 S has been especially designed for compressing strongly expanding material such as foam. With a powerful 22 kW drive, very large loading aperture and manual 6-fold strapping with Quick-Link wire, this machine is perfect for compressing difficult materials. Of course, other packaging materials can also be compressed.

- Hydraulic counterplate for bale removal ensures optimum operating convenience and safety
- The full stroke of the press ram ejects the bale completely
- Stored-program controller PLC
- High levels of compression are ensured by optimally-dimensioned retaining claws
- Optimum operation ensured by the return stroke of the press ram
- Hydraulic loading flap for maximum operating comfort and for precompressing
- Safeguarding of the operating area with protective grid (HL 3521) or infrared light curtains (HL 3521 S) for maximum operator safety
- The unique design and controllable positioning of the press ram allows for easy cleaning and servicing



Model	HSM HL 3521	HSM HL 3521 S
Pressing power in kN	320	320
Motor in kW	9,2 / 15	22
Voltage / Frequency	3 x 400 V / 50 Hz	3 x 400 V / 50 Hz
Loading aperture W x L in mm	740 x 2100	740 x 2100
Loading height in mm	1200	1200
Bale weight in kg, depending on material	up to 600	up to 500
Maximum bale size W x H x L in mm	800 x 1000 x 1200	800 x 1000 x 1200
Hourly output in bales	3 - 7 / 4 - 7	4 - 7
Cycle time idle operation (theor.) in sec.	46 / 24	21
Dimensions of machine L x W x H in mm	6700 x 1650 x 2485	7900 x 1650 x 2485
Machine weight in kg	4900	5900
Strapping	6-fold with tape or wire	6-fold with wire

All technical data and dimensions are approximate values. Technical and design modifications reserved.

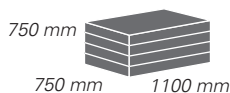


HSM HL 4010

Convenient and powerful

The HSM HL 4010 horizontal baler has been designed with an operating concept and technical features in mind to make it the optimum machine for food retailers. The baler can be fed continuously and with ease via a lifting and tilting device which delivers cardboard from the waste container directly into the press chamber. A hydraulic pre-compactor means that bulky cardboard is dealt with by the machine without difficulty or feeding problems. Bale ejection is handled by the machine efficiently and safely with minimum operator effort. All in all the HSM HL 4010 horizontal baler is a sophisticated solution for food retailers – and at a great price-performance ratio.

- Very low space requirement
- Compresses cardboard
- Especially large loading aperture and hydraulic pre-compactor for bulky materials
- Convenient filling via hydraulic lifting/tilting device
- Trolley locking via magnet and position monitoring through sensor
- Suitable for continuous loading
- Hydraulic counterplate for bale removal ensures optimum operating convenience and safety
- High specific pressing power provides a high compaction of the material and consequently an optimum HGV load
- Intuitive, multilingual operational guidance via graphic description
- Pallet locking mechanism for safe bale removal
- High process reliability



Model	HL 4010
Pressing power in kN	400
Motor in kW	7,5 kW + 1,1
Voltage / Frequency	400V / 50Hz
Loading aperture W x L in mm	690 x 1050
Loading height in mm	1130
Bale weight in kg, depending on material	ca. 300
Maximum bale size W x H x L in mm	750 x 750 x 1100
Hourly output in bales	3 - 4
Cycle time idle operation (theor.) in sec.	ca. 48
Dimensions of machine L x W x H in mm	5640 x 1674 x 2500
Machine weight in kg	4450
Strapping	3-fold with wire

All technical data and dimensions are approximate values. Technical and design modifications reserved.

Technical details at a glance:

Model	Pressing power in kN	Motor in kW	Cycle time when idling (theor.) in sec.	Pressing power when idling (theor.) in m ³ /h	Bale size W x H x L in mm
HSM 8 TE	80	4	21	46	645 x 505 x 500
HSM 12 Gigant	140	7,5	30	75	800 x 600 x 900
HSM HL 1615	150	7,5	32	101	700 x 800 x 1100
HSM HL 3521	320	9,2/15	46 / 24	176 / 275	800 x 1000 x 1200
HSM HL 3521 S	320	22	48	317	800 x 1000 x 1200
HSM HL 4010	400	7,5 + 1,1	48	48	750 x 750 x 1100



Explanations of the technical data:

Pressing power:	Cylinder piston surface multiplied by the maximum hydraulic pressure (theoretical value).
Motor:	Rated power of driving motor.
Voltage / Frequency:	Three-phase power supply.
Loading aperture:	Size of the opening through which material can be loaded.
Loading height:	Height from floor to loading edge.
Bale weight:	The bale weight varies depending on the type, humidity and condition of the compressed material and the bale length or height.
Bale size:	The height/length of the bales varies depending on the expansion force of the compressed material.
Hourly output:	The hourly output depends on the type and quantity of the material to be compressed, on the number of persons loading the machine, on the frequency of use and on the equipment of the machine.
Cycle time in idle operation (theor.):	The time it takes for the press ram to move down without material and return idling to the home position. The pressing time does not depend on the material.
Volume throughput in idle operation (theor.):	The maximum volume that can be theoretically pressed in one hour without interruption of the pressing procedure for loading or strapping. It is calculated by dividing the press chamber volume by the pressing time.
Press chamber size:	The press chamber is the space below the press ram in the home position.
Dimensions of machine:	External dimensions of the machine when set up for operation.
Transport height:	Height for moving to the installation site (without hand pallet truck).
Machine weight:	Net weight of the machine without packaging, loaded material or options.
Strapping:	The number of times the bales are strapped.

Bale weight in kg	Hourly output in bales	Strapping x times	Loading hatch W x H (mm)	Loading height in mm	Machine dimensions W x D x H in mm	Machine weight in kg
up to 70	4 - 7	3	645 x 730	690	2520 x 780 x 850	590
up to 150	3 - 7	3	800 x 1200	780	4300 x 1030 x 1630	1280
up to 180	3 - 7	3 / 4	700 x 1500	990	4530 x 1100 x 1990	1700/1800
up to 600	3 - 7 / 4 - 7	6	740 x 2100	1200	6700 x 1650 x 2485	4900
up to 500	4 - 7	6	740 x 2100	1200	7900 x 1650 x 2485	5900
approx. 300	3 - 4	3	690 x 1050	1130	5640 x 1674 x 2500	4450



Experience HSM's quality and service!

Which is the right baling press for you?

It is not always easy to decide which is the right system for a particular disposal task. We have specialists and dealers all over the world who can analyse your needs on site and give you detailed advice. Only then can you be sure that you will get the right baler to suit your specific requirements.

When does a baling press start paying for itself?

Are you wondering what financial benefits a baling press might have over your existing disposal system? We will calculate the costs you will save by using a baling press rather than external disposal for your individual situation.

What quality can I expect from HSM?

We build high-quality, reliable products to the highest standards of German engineering. In order to meet these standards, we produce the majority of components ourselves, and are certified according to DIN EN ISO 9001.

How long is my warranty?

All our baling presses have a one-year warranty (in single-shift operation).

And if something does go wrong?

We certainly won't leave you alone. Our service guarantees personal support in all service issues – before and after purchase! Our agents and trading partners provide advice and assistance in many countries worldwide.

HSM all-round service...

... ensures that you no longer have to worry about maintenance prevention. HSM offers service contracts for every need – for the long service life of your press and to save you money.

Renting our baling presses?

HSM provides you the option of renting our baling presses. There are various possibilities, which our sales team will be happy to explain.

Any special wishes?

Some materials place special demands on a baling press. HSM offers various versions to meet these requirements. Special solutions are also available on request.

Consumable materials:



Plastic bags

Item number	Suitable for press models with standard equipment	Dimensions W x D x H in mm	Weight/ 25 pcs. in kg
6205 595 000	8 TE	700 x 620 x 1500	8,3
6214 995 000	12 Gigant	950 x 900 x 1800	12,3



Eyelet wire

Item number	Suitable for press models with standard equipment	Wire diameter/length in mm	Weight/roll in kg
6135 993 003	HL 3521	3,1 x 3700	12
6136 993 003	HL 3521	3,1 x 4400	12



Quick-Link wire

Item number	Suitable for press models	Wire diameter/length in mm
6236 993 120	HL 3521 / HL 3521 S	2,95 x 3800
6236 993 130	HL 3521 / HL 3521 S	2,95 x 4000
6236 993 140	HL 3521 / HL 3521 S	2,95 x 4200
6236 993 161	HL 3521 / HL 3521 S	2,95 x 4300
6236 993 150	HL 3521 / HL 3521 S	2,95 x 4500
6236 993 123	HL 4010	2,45 x 3800



Polyester tape

Item number	Suitable for press models with standard equipment	Type	Tensile strength in kg	Length/reel in m	Tape width in mm	Weight/reel in kg
6205 993 010	8 TE	WG 30	280	500	8,0	2,2
6212 993 010	12 Gigant	WG 40	380	500	11,5	3,3
6314 993 000	HSM HL 1615	WG 45	580	400	12,7	3,9
6514 993 000	HL3521 / HL 3521 S	WG 55	670	400	14,6	4,5



Tape clamps

Item number	Item	Weight/ 1000 pcs in kg
6127 990 101	Tape clamps	12

HSM – Specialist baler solutions for all applications:



HSM V-Press 860 L

HSM V-Press

HSM baling presses range with many advantages

- Attractive cost/performance ratio
- Service to fit your needs - large model variety
- Optimal bale sizes and weights - for perfect HGV load utilisation and reduction on transport costs
- Easy-to-use
- High operational flexibility - selectable programmes for pressing cardboard or foils
- Innovative control system ensure long service life
- High throughput rates
- Three configurations available eco, plus und max



HSM FP 3000

HSM Barrel Presses

Short cycle times and very easy handling

- Very sturdy and powerful
- With 170 or 270 kN pressing power
- Suitable for light metal and rolled hoop barrels
- Also available in EEx version according to CE Ex II 2 G EExde II CT4
- High throughput - up to 100 barrels per hour
- With sump tray for residual fluid
- Front inspection window



HSM VK 7215 industrial application

HSM Fully Automatic Channel Baling Presses – individual system solutions, custom disposal systems

- Application areas: logistics, central storages, paper industry, printing plants, distribution centres, industry, disposal companies
- Suitable for the following material: cardboard, paper, foils (PPK), DSD, PET/UBC, composite materials and more
- Feeding: mainly continuous feeding via several systems (e.g. conveyor-belt, forklift, suction system etc.)
- Fully automatic compression and bale strapping
- Up to 1,200 kN pressing power
- Bale weights up to 1,100 kg/m³
- All kinds of feeding possible
- Innovative detailed solutions bring decisive benefits

If you want to know more about our comprehensive range of baling presses, order our special catalogues. Of course, we are happy to talk to you in person. Just call us, e-mail us or send us a fax.

HSM – the company

Cutting, shredding, compressing



Since 1971, HSM has been pursuing a clear strategy – a consistent commitment to quality “made in Germany”. This product and service quality is the key to success in both the office technology and environmental technology business sectors. As a specialist for products and services for data protection as well as technologies for optimising logistics and recycling processes, HSM is one of the world’s leading providers.

Enquire now! We are always glad to help.

Head office in Germany:

HSM GmbH + Co. KG · Austraße 1-9 · 88699 Frickingen / Germany
Tel. +49 7554 2100-0 · Fax +49 7554 2100-160
info@hsm.eu · www.hsm.eu

E-mail / hotline:

Gratis Hotline
DE, AT, BE, NL, LU, DK
Tel. 00800 4 477766
Fax 00800 4 477767

HSM Vertrieb Deutschland
Deutschland@hsm.eu

HSM Vertrieb Österreich
Austria@hsm.eu

HSM Verkoop België, Nederland,
Luxemburg
Benelux@hsm.eu

HSM Salgs Support Danmark
Danmark@hsm.eu

HSM Commerciale Italia
Italia@hsm.eu

HSM subsidiaries and sales offices:

HSM GmbH + Co. KG
Oficina Barcelona
C/Tona
Nave n° 15 “El Lago”
Pol. Ind. Monguit
08480 L’Ametlla del Vallès
Barcelona
Spain
Tel. +34 93 8617187
Fax +34 93 8463417
Spain@hsm.eu
www.hsm.eu

HSM France SAS
Parc de Genève
240, Rue Ferdinand Perrier
69800 Saint-Priest
France
Tél. +33 472 210580
Fax +33 472 517481
France@hsm.eu
www.hsm.eu

HSM of America LLC
419 Boot Road
Downingtown
PA 19335
USA
Tel. +1 484 237-2308
+1 800 613-2110
Fax +1 484 237-2309
customerservice@hsmofamerica.com
info@hsmofamerica.com
www.hsmofamerica.com

HSM (UK) Ltd.
14 Attwood Road / Zone 1
Burntwood Business Park
Burntwood · Staffordshire
WS7 3GJ
United Kingdom
Tel. +44 1543 272-480
Fax +44 1543 272-080
info@hsmuk.co.uk
www.hsmuk.co.uk

HSM Polska Sp. z o.o.
ul. Emaliowa 28
02-295 Warszawa
Poland
Tel. +48 22 862-2369
Fax +48 22 862-2368
info@hsm Polska.com
www.hsm.eu



HSM®